



## Test Report

No.HKHL1209028500JL

Date:SEP 26, 2012

Page 1 of 4

MINERON (H.K.) CO.,LTD  
35 - 37 ON LOK MUN ST.  
ON LOK TSUEN, FANLING,  
N.T. HONG KONG

The following samples were submitted and identified on behalf of the client as:  
GAG SHEET.

SGS Case No. : HKHL120900016211  
Lot No. : FT8099  
Sample Receiving Date : SEP 11, 2012  
Test Performing Date : SEP 11, 2012 – SEP 25, 2012

Test Requested : Please refer to the result summary.

Test Method & Results : Please refer to next page(s).

Result Summary :

Test Requested	Conclusion
European RoHS Directive 2011/65/EU Annex II; recasting 2002/95/EC	PASS

Signed for and on behalf of  
SGS Hong Kong Ltd.

Che Wai Leuk, Jerry  
Section Manager

This document is issued by the Company subject to its General Conditions of Service printed overleaf, available on request or accessible at <http://www.sgs.com/en/Terms-and-Conditions.aspx> and, for electronic format documents, subject to Terms and Conditions for Electronic Documents at <http://www.sgs.com/en/Terms-and-Conditions/Terms-e-Documents.aspx>. Attention is drawn to the limitation of liability, indemnification and jurisdiction issues defined therein. Any holder of this document is advised that information contained hereon reflects the Company's findings at the time of its intervention only and within the limits of Client's instructions, if any. The Company's sole responsibility is to its Client and this document does not exonerate parties to a transaction from exercising all their rights and obligations under the transaction documents. This document cannot be reproduced except in full, without prior written approval of the Company. Any unauthorized alteration, forgery or falsification of the content or appearance of this document is unlawful and offenders may be prosecuted to the fullest extent of the law.

Unless otherwise stated the results shown in this test report refer only to the sample(s) tested and such sample(s) are retained for 30 days only.





## Test Report

No.HKHL1209028500JL

Date:SEP 26, 2012

Page 2 of 4

Test Results :

### European RoHS Directive 2011/65/EU Annex II; recasting 2002/95/EC

Cadmium, Lead, Mercury, Hexavalent Chromium, Polybromobiphenyl (PBB) and Polybromodiphenyl ether (PBDE) content

Method : With reference to IEC 62321:2008. Lead, Cadmium and Mercury were analyzed by Inductively Coupled Argon Plasma Spectrometry, Chromium (VI) was analyzed by UV-Visible Spectroscopy and PBB, PBDE were analyzed by Gas Chromatography – Mass Spectrometry (GC-MS).

Test Item	Result (mg/kg)		Reporting Limit (mg/kg)	Permissible Limit (mg/kg)
	1			
Cadmium (Cd)	ND		5	100
Lead (Pb)	ND		5	1000
Mercury (Hg)	ND		5	1000
Hexavalent Chromium (Cr(VI))	ND		5	1000
<b>Sum of PBBs</b>	ND		--	1000
Monobromobiphenyl	ND		5	--
Dibromobiphenyl	ND		5	--
Tribromobiphenyl	ND		5	--
Tetrabromobiphenyl	ND		5	--
Pentabromobiphenyl	ND		5	--
Hexabromobiphenyl	ND		5	--
Heptabromobiphenyl	ND		5	--
Octabromobiphenyl	ND		5	--
Nonabromobiphenyl	ND		5	--
Decabromobiphenyl	ND		5	--
<b>Sum of PBDEs</b>	ND		--	1000
Monobromodiphenyl ether	ND		5	--
Dibromodiphenyl ether	ND		5	--
Tribromodiphenyl ether	ND		5	--
Tetrabromodiphenyl ether	ND		5	--
Pentabromodiphenyl ether	ND		5	--
Hexabromodiphenyl ether	ND		5	--
Heptabromodiphenyl ether	ND		5	--
Octabromodiphenyl ether	ND		5	--
Nonabromodiphenyl ether	ND		5	--
Decabromodiphenyl ether	ND		5	--
<b>Comment</b>	PASS		--	--

### Sample Description:

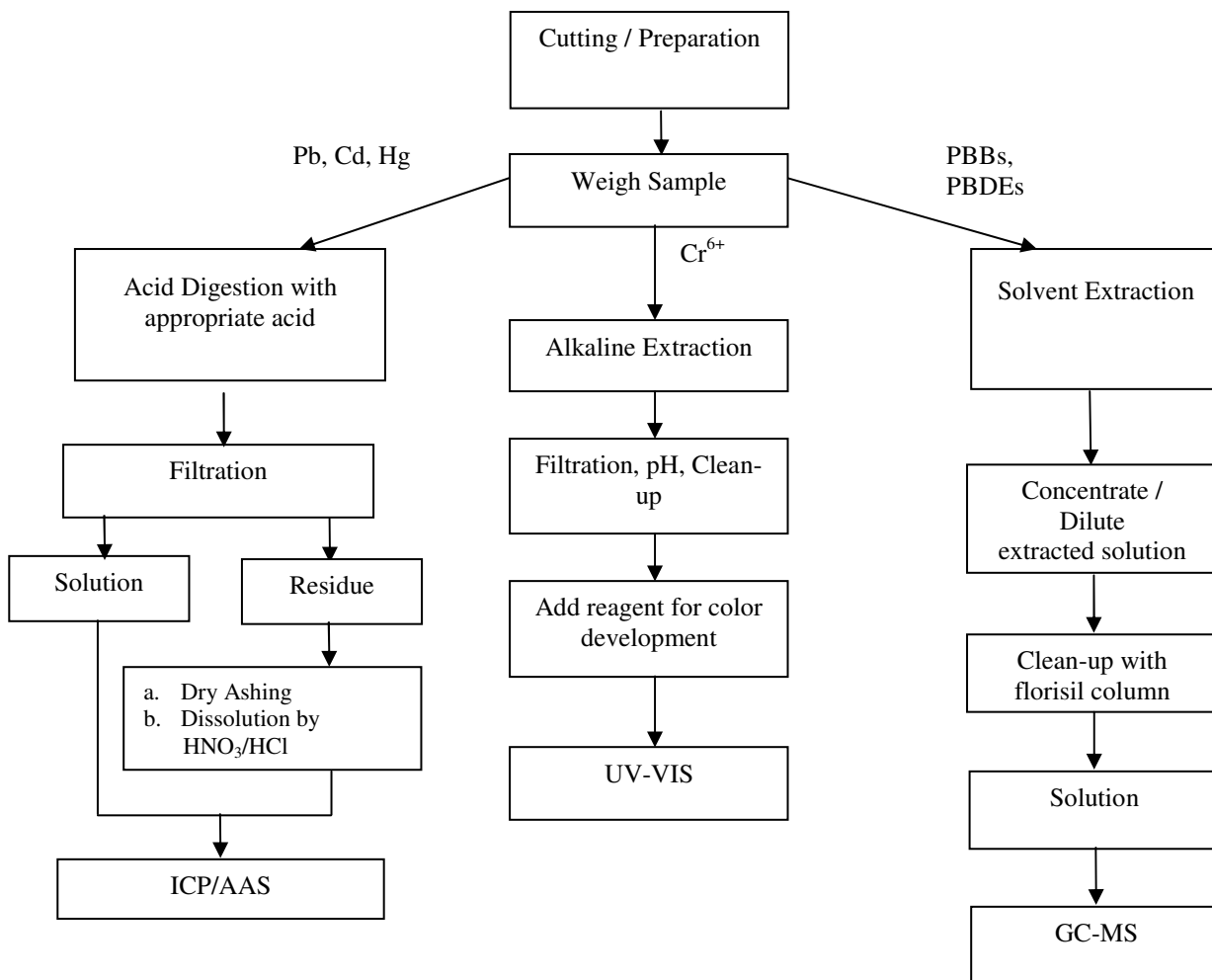
1. Transparent Plastic

This document is issued by the Company subject to its General Conditions of Service printed overleaf, available on request or accessible at <http://www.sgs.com/en/Terms-and-Conditions.aspx> and, for electronic format documents, subject to Terms and Conditions for Electronic Documents at <http://www.sgs.com/en/Terms-and-Conditions/Terms-e-Documents.aspx>. Attention is drawn to the limitation of liability, indemnification and jurisdiction issues defined therein. Any holder of this document is advised that information contained hereon reflects the Company's findings at the time of its intervention only and within the limits of Client's instructions, if any. The Company's sole responsibility is to its Client and this document does not exonerate parties to a transaction from exercising all their rights and obligations under the transaction documents. This document cannot be reproduced except in full, without prior written approval of the Company. Any unauthorized alteration, forgery or falsification of the content or appearance of this document is unlawful and offenders may be prosecuted to the fullest extent of the law.

Unless otherwise stated the results shown in this test report refer only to the sample(s) tested and such sample(s) are retained for 30 days only.

Note : 1. mg/kg = milligram per kilogram  
2. ND = Not Detected

**Flowchart:**



Note : 1. For Cr(VI), spot test is adopted for metal sample.  
2. The Cd and Pb contents test on polymeric samples were dissolved totally by pre-conditioning method according to above flow chart.

This document is issued by the Company subject to its General Conditions of Service printed overleaf, available on request or accessible at <http://www.sgs.com/en/Terms-and-Conditions.aspx> and, for electronic format documents, subject to Terms and Conditions for Electronic Documents at <http://www.sgs.com/en/Terms-and-Conditions/Terms-e-Document.aspx>. Attention is drawn to the limitation of liability, indemnification and jurisdiction issues defined therein. Any holder of this document is advised that information contained hereon reflects the Company's findings at the time of its intervention only and within the limits of Client's instructions, if any. The Company's sole responsibility is to its Client and this document does not exonerate parties to a transaction from exercising all their rights and obligations under the transaction documents. This document cannot be reproduced except in full, without prior written approval of the Company. Any unauthorized alteration, forgery or falsification of the content or appearance of this document is unlawful and offenders may be prosecuted to the fullest extent of the law.

Unless otherwise stated the results shown in this test report refer only to the sample(s) tested and such sample(s) are retained for 30 days only.



SGS authenticate the photo on original report only

\*\*\* End of Report \*\*\*

This document is issued by the Company subject to its General Conditions of Service printed overleaf, available on request or accessible at <http://www.sgs.com/en/Terms-and-Conditions.aspx> and, for electronic format documents, subject to Terms and Conditions for Electronic Documents at <http://www.sgs.com/en/Terms-and-Conditions/Terms-e-Documents.aspx>. Attention is drawn to the limitation of liability, indemnification and jurisdiction issues defined therein. Any holder of this document is advised that information contained hereon reflects the Company's findings at the time of its intervention only and within the limits of Client's instructions, if any. The Company's sole responsibility is to its Client and this document does not exonerate parties to a transaction from exercising all their rights and obligations under the transaction documents. This document cannot be reproduced except in full, without prior written approval of the Company. Any unauthorized alteration, forgery or falsification of the content or appearance of this document is unlawful and offenders may be prosecuted to the fullest extent of the law.

Unless otherwise stated the results shown in this test report refer only to the sample(s) tested and such sample(s) are retained for 30 days only.